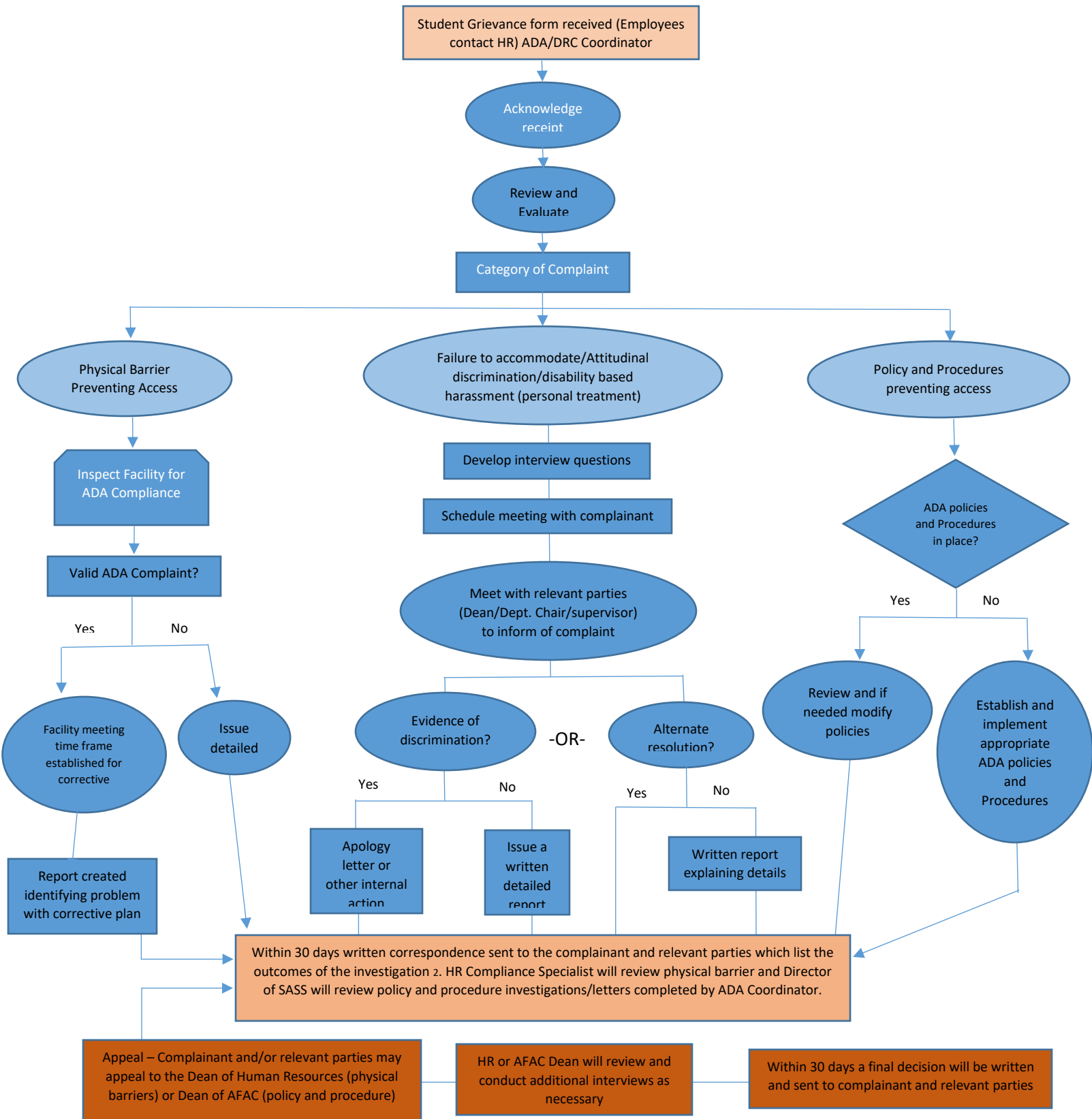


ADA Grievance Procedure Flow Chart



1. Evidence that conduct sufficiently severe, persistent or pervasive enough to deny or limit complainants ability to participate in or benefit from the colleges programs, activities or services?

2. Section 504 implementing regulation specifies that the grievance process must be both "prompt and equitable" and must incorporate due process

While students are always encouraged to seek resolutions of complaints within the structure of the college policies, they may have alternate options available. US Department of Education, Office of Civil Rights 1-800-421-3481